

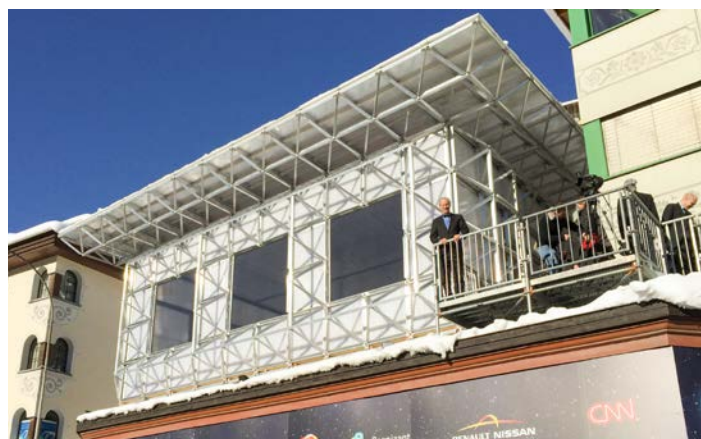
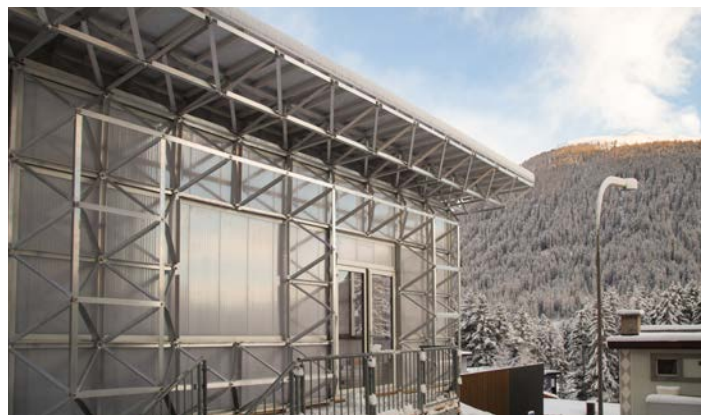
ICE HOUSE™

INNOVATION
FOR THE
CIRCULAR
ECONOMY



a collaboration | SABIC | HubCulture | McDonough Innovation
designed and built by William McDonough + Partners, Architects

DAVOS 2018



WonderFrame™ and ICEhouse™ are trademarks of McDonough Innovation.

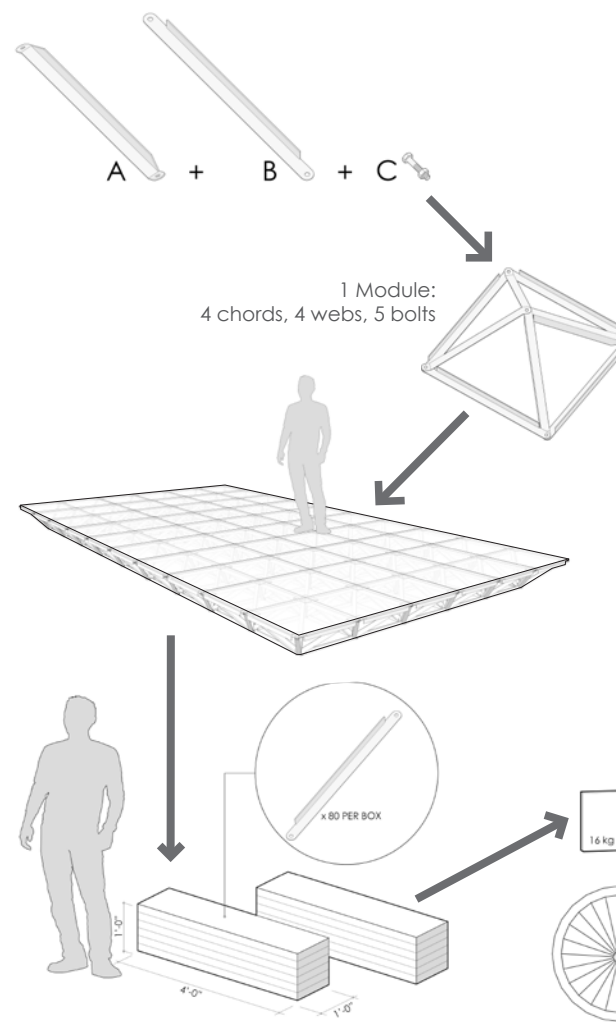
ICEhouse, designed and executed by William McDonough + Partners, Architects and commissioned by Hub Culture with support from SABIC, is an adaptable and reusable building inspired by the positive design framework described in *Cradle to Cradle: Remaking the Way We Make Things*, the Sustainable Development Goals of the United Nations, and the reuse of resources implicit in the circular economy.

This special Davos edition is made of technical materials (polymers, aluminum, and aerogel) which will be returned to industry at the end of their use cycle as part of this building. These elements can be endlessly used, reused or recycled in new products across generations.

ICEhouse is designed to offer visitors to Davos a curiosity of the opportunities of WonderFrame™, McDonough's broader vision for a simple, flexible, and affordable floor and roof structural system that could be used to help to fulfill urgent shelter needs around the world.

ICEhouse WonderFrame

An open source space frame system that uses locally available materials* to make cost effective components that can be assembled into safe, secure, expandable and attractive homes, in a day, using simple tools.



*everything from locally available feedstocks to recovered materials at low cost of goods, such as thermoplastics from the refuse streams



William McDonough, with his colleagues and partner companies, is working on an approach to structures that could fulfill urgent shelter needs. The vision is to find replacements for tents, wood, and steel; and to rethink the meaning of "shelter," using a rapid response emergency structural system that could transform from temporary housing into permanent housing and dwellings of long-term value. An important element is the system's adaptability to local cultures and individual aesthetics.

WonderFrame, the structural part of the system, is comprised of three basic pieces designed to efficiently nest and pack into containers sized for easy transport and local distribution (18kg/box).



“It is time to explore the delightful prospect of a human design inspired by Innovation for the Circular Economy (ICE). The lightweight structural elements of this meeting space are erected in a few days. After one week in its present position on the Promenade in Davos, the ICEhouse will be placed in a single container to its next use.”

William McDonough, FAIA Int. FRIBA
Architect of the ICEhouse
Chair, World Economic Forum MetaCouncil on Circular Economy (2014-2016)